

AIR WINCH MODEL FA10-24



Built-in multi disc brake
CE-marked
Emergency stop

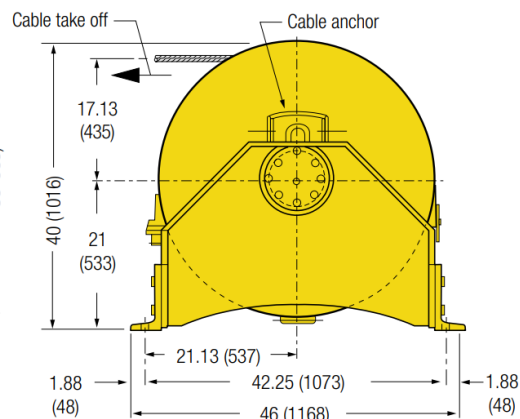
- **Your assurance of quality:**

Force 5 winches are designed to meet or exceed independent third-party requirements. Models have been design reviewed or Type Approved by ABS, DNV and LRS. Type Approval certificates are available upon request. This modern winch is designed for the harshest environments!

- **Versatility:**

Force 5 winches offer maximum versatility to meet numerous lifting, pulling, or tensioning challenges. Substitute a wide variety of gear ratios to better meet your speed and capacity needs. Design, material, and dimensional changes are a snap with fabricated frames. Available option packages meet the requirements oil refineries, mining, construction and offshore oil drilling

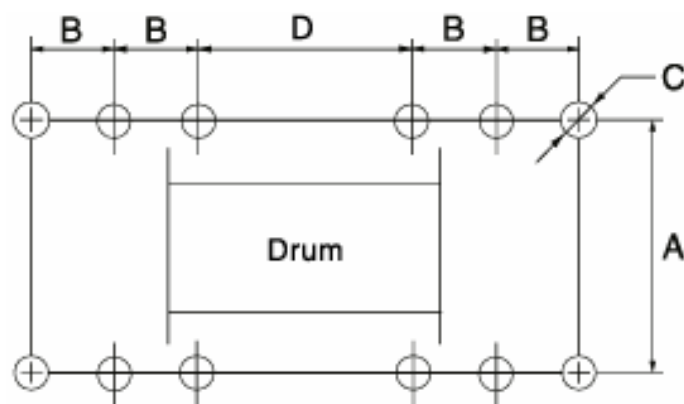
- Meets ASME B30.7
- 5:1 design factor at rated load
- Full drum rated line pull: a Force 5 winch always pulls or lifts its rated load at any and all wire rope layers.
- Internal gearbox and optional disc brake combination provide load control superior to other types of air winches.
 - Compact, space-saving frame design and fabricated alloy steel drum fit easily into tight spaces
 - Variable drum length and wire rope storage for special applications
 - Standard operating temperature range is 0C° through 60C°.
 - Minimum 18:1 drum diameter to wire rope diameter ratio reduces wire rope wear.
 - Longer drum lengths and taller flanges provide greater wire rope storage

[illegible]

Model no.	Utility rating 5:1 top layer line pull		design factor top layer line speed		Drum length A			Avg. air consumption at rated load @ 90 psi (6.3 bar)		Maximum stall pull 1st layer		Pipe inlet size		Hose size		Ship weight	
	lbs	kg	fpm	m/min	in.	mm	hp	scfm	m ³ /min	lbs	kg	in.	mm	in	mm	lbs	kg
FA10-24	22000	10000	23	7	24	610	31	800	22.7	38000	17273	1 1/4	32	1 1/2	38	3200	1451

Model	Capacity		Recommended wire rope size		Drum length		Rope diameter											
	lbs	kg	in.	mm	in.	mm	½" (13 mm)		⅝" (16 mm)		¾" (19 mm)		⅞" (22 mm)		1" (25 mm)		1 ⅛" (29 mm)	
FA10	22000	10000	1 ⅞	29 mm	24	610					2488	758	1962	598	1332	405	1026	313
					30	762					3130	954	2471	753	1679	511	1295	395
					36	915					3773	1150	2980	908	2027	617	1564	477
					40	1016					4201	1280	3319	1011	2258	688	1744	531
					50	1270					5271	1606	4168	1270	2837	865	2192	668

Winch Bolt Hole Mounting Dimensions



(Dwg. MHP0920)

Table 2 — Winch Bolt Hole Mounting Dimensions

Dimension		Drum Length (inches)						
		16	20	24	30	36	40	50
A	in	25						
	mm	1073						
B	in	6			8			
	mm	152			203			
C	in	15/16						
	mm	24						
D (with band brake)	in	6	10	14	12	18	22	N/A
	mm	152	254	356	305	457	559	
D (without band brake)	in	N/A	6	10	8	14	18	28
	mm		152	254	203	356	457	711