

Hang Off Equipment



Used for handling and routing POD hoses, wires, cables, umbilicals etc. in drilling operations

The solution is used in a variety of applications and capacities. We have different types of hang-off equipment in our portfolio. The products are designed, calculated and produced by Imenco. We have several designs for different purposes and sizes, all approved by DNV or ABS. Please contact us for more details about different sizes and approvals.

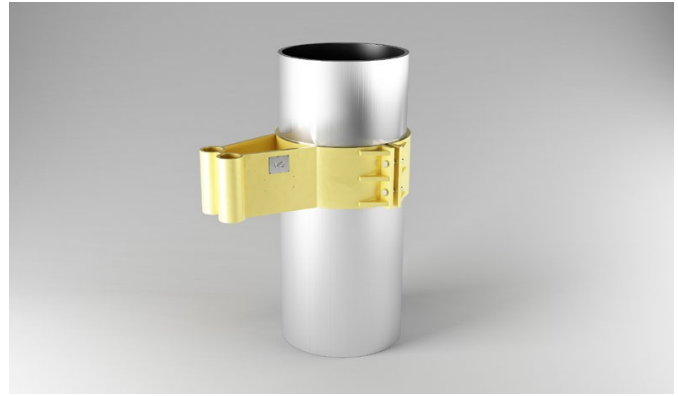
For further information, email
commercial@imenco.com

Hang Off Equipment

Product Portfolio



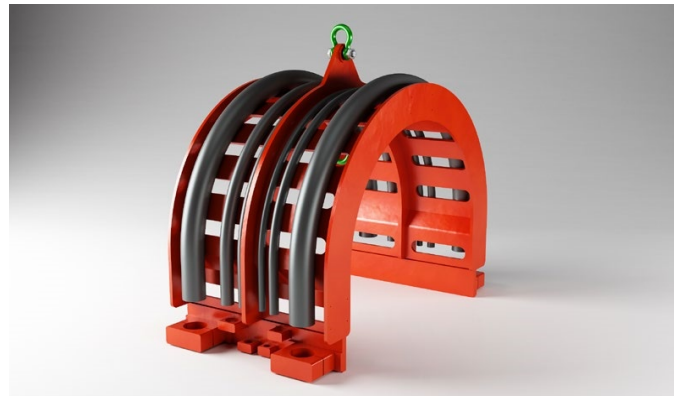
Single and Double Banana Sheave



Slip Joint Clamp



Slip Joint Saddle



Hang Off Saddle



Guide Sheave

For further information, email
commercial@imenco.com