

MANUAL TROLLEY



- **Mechanical and ready to go.**

The reliability, operating smoothness, and safety of your hoist depend on the trolley. Heat-treated steel wheels, sealed bearings, and a low bend radius are just a few of the benefits of a Kito geared trolley.

- **Manually operated**

Perfect for traversing a load when electrical power is not needed or available, Kito's TSG geared trolleys can be combined with almost any Kito hoist.

- **STAMPED STEEL SIDE PLATES**

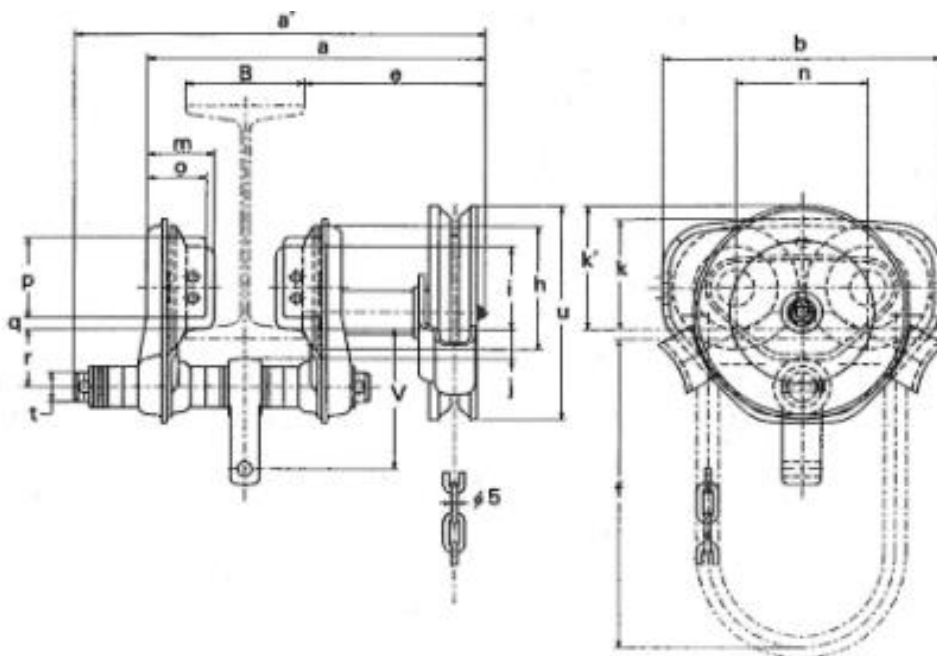
Designed to be lighter and easier to install, TSG model 1 ton to 3 ton trolleys are specifically designed to be robust and durable, without unnecessary weight and bulk.

- **LOW MINIMUM BENDING RADIUS**

For curved beams where sharp bends are required, Kito's TSG trolleys allow for a low minimum bend radius.

- **Fits Tapered Beams or Flat Flanged Beams**

The TSG Trolley's wheels are adjustable to work with flat tapered and flanged beams, allowing you to use existing equipment without customization. Permanently lubricated ball bearings also increase reliability and provide smooth operation when traversing a load.



Cap. (t)	Código do Produto	Dimensão (mm)																						
		a (max)*		a'(max)		b	e		f	h	i	j	k	k'	m	n	o	p	q	r	t	u	v	
		C	E	C	E		C	E															C	E
1	TSG010C,E	275(215)	311(215)	309(249)	345(215)	236	116(56)	152(56)	2.7	106	71	28	95	106	56	112	50	69	10	50	25	183	106	119
1.5	TSG015C	349(264)	-	385(300)	-	280	154(69)	-	2.7	127	85	34	112	109	71	131	63	83	10	62	32	183	129	-
2	TSG020C,E	349(264)	349(264)	385(300)	359(280)	280	154(69)	154(69)	2.7	127	85	34	112	109	71	131	63	83	10	62	32	183	129	138
2.5	TSG025C,E	359(280)	359(280)	398(320)	359(280)	324	157(79)	157(79)	2.7	148	100	36	134	114	80	152	74	102	10	68	36	183	144	153
3	TSG030C,E	359(280)	359(280)	398(320)	398(320)	324	157(79)	157(79)	2.7	148	100	36	134	114	80	152	74	102	10	68	36	183	169	153
5	TSG050C,E	376(273)	376(273)	400(297)	400(297)	400	156(53)	156(53)	3.2	169	118	47	144	131	81	178	70	104	10	68	54	183	228	171

Tabela 2-6 Dimensões do Suspensor C

Suspensor pequeno 0.5t a 2.5t					
Suspensor grande 3t a 5t					
Capacidade do Trole (t)	Capacidade do Suspensor C (t)	Dimensão (mm)			
		a	b	h	e
0.5	0.5	26	33	14	14
1	1	28	37	18	18
1.5	2	32	40	22	22
2					
2.5	2.5	36	44	27	25
3	3	40	48	24	30
5	5	60	70	33	36